

2. WELCOME	
4. REASONS TO STUDY WITH US	
6. LEVELS OF STUDY	
8. ART & DESIGN FOUNDATION DIPLOMA	
12. PAINTING COURSE	
16. DRAWING COURSE	
18. CHILDREN'S BOOK ILLUSTRATION COURSE	
20. CONTEMPORARY ART PRACTICE	
22. FIGURE COURSE	
24. LANDSCAPE COURSE	
26. ONE DAY PAINTING COURSE	
28. PRINTMAKING COURSE	
30. ADVANCING STUDIO PRACTICE	
32. ARTIST'S MENTORING	
34. GRADUATE RESIDENCY PROGRAMME	
36. APPLYING	
37. ABOUT EDINBURGH	
38. STUDENT SUPPORT	
39. FEES & FUNDING	



In studying at Leith School of Art you are joining a creative community which values and supports every student as an individual.

Our courses are designed to encourage personal growth, technical ability and an understanding of the creative process. This is provided through high quality teaching from professional artists, well equipped studios and all the materials necessary for you to make ambitious work and develop the skills you need to engage with life as a creative practitioner.

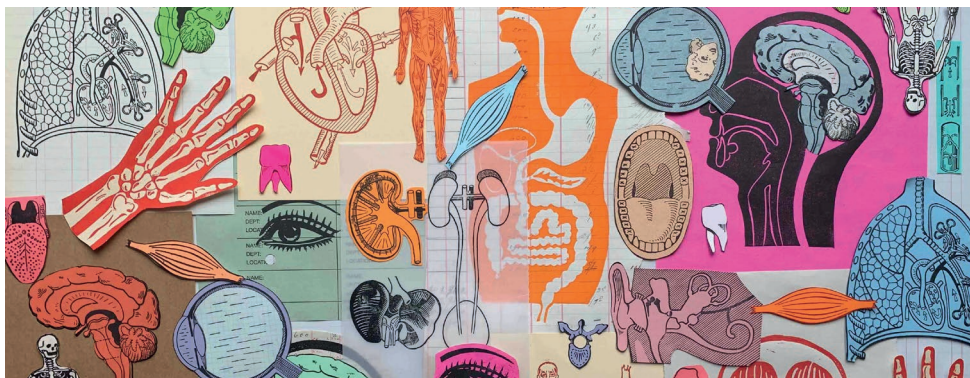
Once you have completed a year-long course, you will be equipped to continue with the next stage of your development, whether you are moving on to another course at Leith School of Art, a degree course, a graduate looking to launch your professional career or someone who has always enjoyed art and wants to find a way to make it a more serious

part of your life. We have a proven track record of enabling people to realise their ambitions, and our alumni are successful in a broad range of creative and cultural industries as artists, designers and makers.

Leith School of Art is not just about the work; we are a community of artists and we pride ourselves on our caring and lively environment. While we encourage our students to study hard and be ambitious, we emphasise the importance of working together and supporting each other. When you are here you will establish a network of friends and creative colleagues who will inspire, challenge and support you throughout your time at the School and beyond.



## REASONS TO STUDY WITH US



### AN INDEPENDENT SCHOOL APPROVED BY THE SQA

Leith School of Art is an independent art school with charitable status and approved and accredited by the SQA (Scottish Qualifications Authority). Our independence gives us the freedom to offer more to our students in terms of course content, studio time and teaching methods.

### HIGH TUTOR CONTACT TIME

We provide more studio and tutor contact time than many other institutions, where full-time courses typically offer between 15 and 20 hours per week. Our year-long courses provide a high number of studio hours per day combined with enviable tutor to student ratios. As a consequence students receive intensive and direct contact teaching which is additionally supported by an online learning platform enabling access to valuable course materials.

### MATERIALS

Core materials are included in the fees. This allows students the freedom to concentrate on their creative practice. Over time, students will learn about methods, processes and materials and establish what works best for them in order to build their own collection.

### OUR SIZE

We are a small art school and we get to know every student individually. This means that students form close bonds with one another and a great many lifelong friendships have been forged within our studios. Being small means we are able to respond to students if they need additional support, and also assist students with their individual challenges and goals.



### EXHIBITIONS

Every year the School holds exhibitions where students are invited to showcase their work. Our exhibitions are very well attended, and provide an opportunity for students to make and present a body of work. Exhibitions often open up further opportunities for students to exhibit elsewhere, to sell work and raise their creative profile.

### OUR COMMUNITY

Leith School of Art is committed to equality, diversity and inclusion. We aim to create a positive space which is focussed on learning. Our students are at the heart of our community, and are the centre of what we do.

### TEACHING STAFF

All our tutors are professional practising artists and highly experienced teachers. We hold a strong belief in the importance of teaching and our tutors work closely with each student to help them develop both their practical skills and the development of their ideas.

### SUPPORT STAFF

The School has a dedicated team of studio assistants who provide support for technical aspects of studio practice.

We also have a dedicated management and administrative team who are here to ensure the smooth running of the School. Together we provide support with any issues students might face including accommodation, finance, and welfare



## LEVELS OF STUDY

We offer courses at all levels and we tailor learning to each individual. Courses can be used as a progression into further learning, or to develop or consolidate previous learning experience. Progression can be made from one course to another within the School, or to other courses outside the School.

### SHORT COURSES –

Day and Evening Courses,  
Weekend Workshops and Summer School

Our Short Courses are open to anyone, regardless of previous experience. Courses are booked term-by-term and are an ideal way of finding out what areas you might like to pursue and for building up a portfolio. For more information please visit our website, or contact the School to request copies of our Short Course leaflets.

### YEAR LONG COURSES –

One Day Per Week

Access to our year-long courses is gained through application and interview with portfolio. Students use these courses as a stepping stone onto other year-long courses and other institutions. Students may already hold a degree in an arts subject and use these courses to augment or widen their artistic practice, or to gain experience with a view to personal or professional development.

Each course awards a certificate upon successful completion.

### YEAR LONG COURSES –

Three and Four Days Per Week

Our full-time courses run between three and five days per week and require work to be undertaken outside of the School. Access is gained through application and interview with portfolio. Students use these courses to develop professionally; either as a stepping stone onto another course, or as a platform from which to establish their own artistic practice. The courses can be taken either as a pre-degree course, or as a post-graduate course, depending on the student's level of experience. Our tutors structure their teaching around student needs, enabling students to achieve their artistic aims.

### YEAR LONG COURSES –

Advanced Courses

Our suite of advanced courses offer an ideal platform for students wishing to take the next step in the development of their personal creative, professional or academic development.

### PROGRESSION WITHIN LEITH SCHOOL OF ART

Some students use our courses to build up a repertoire of skills and experience for their own personal and professional development. Our courses can be used to progress on from one to another, year upon year, or combined within one or two years to create a 'diet' of courses that provide the learning each student requires. For further enquiries or to discuss your objectives, please contact the School to make an appointment.



### PROGRESSION TO OTHER INSTITUTIONS

Many students use our courses to apply into undergraduate and postgraduate degree programmes in the UK and abroad. Leith School of Art has an unrivalled reputation for enabling students to gain access to courses at leading art colleges and universities.

### OPEN DAYS

Open Days give the opportunity to visit the School, meet staff and students and find out more about the courses we offer. They provide information about making an application, interviews, fees and funding, student support and portfolio reviews. Dates of upcoming Open Days can be found on our website along with details of how to book a portfolio review.





## ART & DESIGN FOUNDATION DIPLOMA

Our accredited Art & Design Foundation Diploma stands alone in offering four full days of tutor contact time in the studio, with an additional day of research work set each week outside the studio for the students to complete. This makes the course unique in offering an intensive five day per week course, equivalent in level to a Certificate of Higher Education, enabling students to develop as rapidly as possible, serving as the most effective springboard for students wishing to move into further study.

Throughout the course students build up a personal portfolio for applying to art and design degree courses: for direct entry into second year in Scotland, or directly into degree courses in England or abroad. The structure of the course is designed to help students identify and develop the creative discipline they want to pursue. The course starts with a wide range of set projects, introducing students to a variety of disciplines from painting and printmaking to textiles and graphic design. Students then choose what they wish to focus on for application and progression to further study and are given targeted one-to-one tuition in support of a strong, fully developed portfolio.

We provide more studio and tutor contact time than many other institutions with tutors present between 9.30am and 4.30pm and this direct contact is additionally supported by expert technical support and an online

learning platform enabling access to key learning resources. The course offers a strong tutor/student ratio which provides each student with high levels of teaching and individual guidance on their work and pursuit of their creative ambitions.

Like all other courses at Leith School of Art students of the Art and Design Foundation Diploma includes all core materials as part of the course. We do this to allow students the freedom to focus on their creative practice. Over time students learn about methods, processes and materials and what works best for their individual creative practice

### PROGRESSION

The School has an exceptional track record and a consistently high success rate for students gaining places in the best art colleges in the UK and overseas. Some examples include: Edinburgh College of Art, The Glasgow School of Art, Duncan of Jordanstone College of Art & Design, The Ruskin School of Drawing, Central Saint Martins, Chelsea College of Arts, London College of Fashion and Brighton College of Art. amongst many others. Students go on to study an array of disciplines including Fine Art, Fashion, Illustration, Performance Costume Design, Textiles, Architecture, Animation and Visual Communication. Each student's application to further or higher education is supported and supervised by staff with longstanding experience and understanding of the UCAS system.





## ART & DESIGN FOUNDATION DIPLOMA

The process of filling in forms, writing personal statements, creating effective digital and online portfolios, creating striking physical portfolios and preparing for interviews is covered, with tutors keeping track of each student's application in detail, providing the best possible support throughout the process.

### COURSE CONTENT

Drawing underpins all aspects of the course, and students are encouraged to explore drawing as the engine for developing creative ideas and an integral part of all the projects they undertake. Sketchbook development is central to a successful portfolio and students are taught how to use these effectively to research, generate and develop ideas, and to document their work.

In addition to the support students receive through studio teaching and one to one tutorials, the course also provides regular lectures, seminars and peer group activities to enhance contextual and historical understanding of individual creative practice. Students also benefit from contact with graduate artists studying on a year-long Residency at Leith School of Art.

Learning on the course culminates in a major End of Year Exhibition which gives each student the opportunity to exhibit a developed body of work or project.

### FEES

Fees cover all costs of tuition, four full days in the studio, use of equipment and core materials required for the completion of the course. Students have full access to expertise and equipment.

### ENTRY REQUIREMENTS

There are no formal academic entry requirements for the course. Students intending to use the Foundation Diploma to apply to a specific course for further study, they are advised to check the entry requirements for that course.

### QUALIFICATION

The course is accredited by the SQA to SCQF (Scottish Credit and Qualifications Framework) Level 7, equivalent to a Certificate of Higher Education, or completion of a Higher Education the first year of a Scottish University Degree. Students can apply for direct entry into second year of Scottish University courses (usually 4 years in length) and progression to BA (Hons) Degree Art and Design Courses in the UK (usually 3 years in length).

### APPLICATION

Applicants will be invited to interview with their portfolio. Portfolios should contain a variety of recent examples of art work which can include drawing, painting, design, 3D work, and development work; for example drawings and preparation work in sketchbooks. For further advice contact the School.





This year-long course focuses entirely on the discipline of painting within fine art practice and is ideal for students who want to push the boundaries of what working in paint can achieve. The course enables each student to develop an individual and authentic approach to painting, working on all aspects of their practice; from drawing, developing ideas, through to experimenting with materials and imagery and producing resolved paintings.

### COURSE INFORMATION

The course is initially structured around set projects that introduce a range of painting processes and materials, including working with oils, acrylics and mixed-media. All of these methods are introduced alongside lectures that explore the ideas behind different ways of painting, both historical and contemporary. As the course progresses, the emphasis is placed on each student developing individual projects that they work on for the remainder of the course. This involves identifying subjects or themes and particular approaches that work for them. Painting is taught as a process that involves research, developing ideas through drawing, extensive periods of experimentation, and building up several paintings simultaneously in stages, or layers. The tutors will work

intensively with the students in this way; encouraging the feeling of the work, developing their ideas, and exploring the qualities important to the individual. By the culmination of the course, students will be working on producing a body of work to be exhibited at the end of year exhibition in June. While still developing their individual creative process, the focus shifts towards exploring and pushing the qualities of the paintings themselves, such as composition, tonal and colour understanding and paint handling.

Students are required to not simply develop techniques, but engage with the ideas that inform their work based on how well the paintings convey their ideas. Throughout the course students are encouraged to develop their contextual and historical awareness of painting to inform their own works. The lecture programme is a key aspect in this process.

### APPLICATION

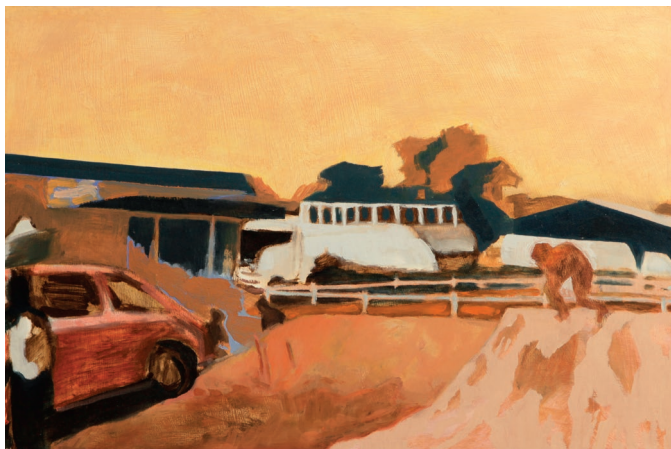
Applicants are interviewed with their portfolio, which should show evidence of around 10 pieces of work made in the last three years and include sketchbooks which demonstrate experimentation, artists research and the development of ideas.



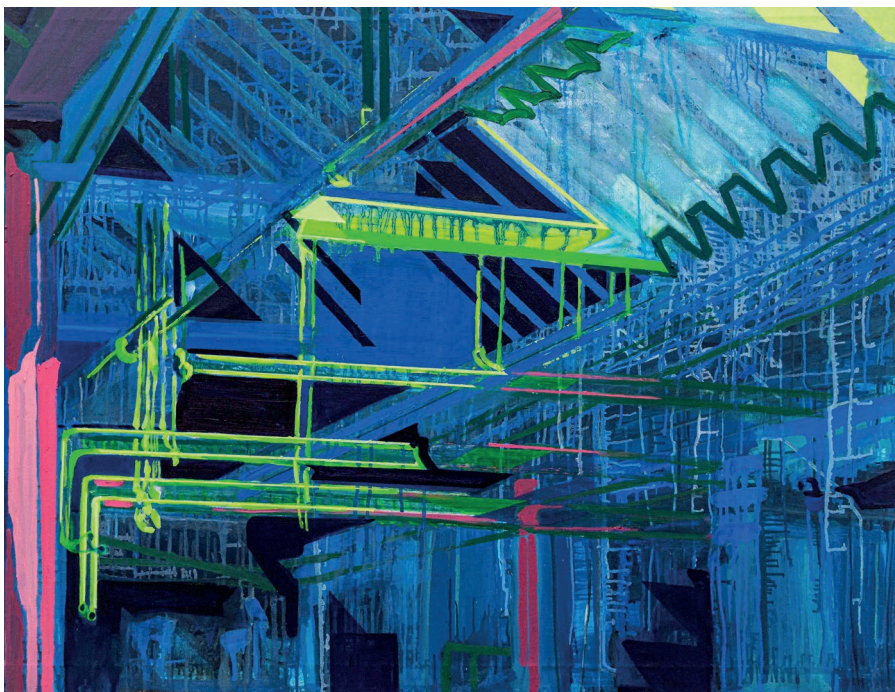
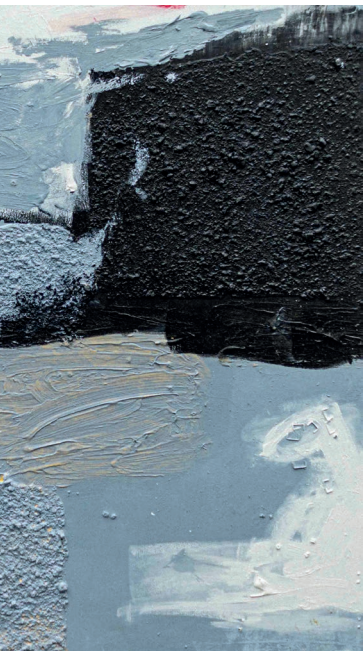




## PAINTING COURSE







At Leith School of Art, we believe that drawing has a fundamental role in all art practice. It underpins work in any discipline; not only does good drawing enhance the visual impact of many art forms, it informs the artist's mind, allowing them to think critically, to have rigour within their work and insight into the world around them. In this course participants will have the opportunity to fully explore drawing as a means of expression in its own right and also improve and expand their own drawing practice as a way of supporting personal work in other media. A broad definition of what drawing can mean will be explored but will always be underpinned by direct observation of the real world. This involves looking at composition, proportion and scale, and mark making.

### COURSE INFORMATION

In the first term there will be a series of projects where students are challenged to explore particular approaches to drawing. The use of the abstract language of mark, line, tone and composition will be combined with a pursuit of form, space, and light. Different materials will be used singly and combined into mixed media work. Colour is introduced in the second half of the term. As the course develops, more complex ideas of emphasis, feeling and meaning become

important. Initially the subject matter will be provided, ranging from set ups in the studio, life models and trips out for location drawing. In the second term, alongside working from the figure and still life set ups, the students will supply the subject matter; choosing subjects they wish to explore in more depth. In the third term students will engage in personal projects which they will develop over the weeks into substantial bodies of work. This will form the basis of the work shown at the end of year exhibition in June. Lectures at the start of each week and study trips are an important part of the course to inform and inspire students. Discussion and evaluation of each student's progression will take place towards the end of the first and third terms.

### APPLICATION

Applicants are encouraged to come to interview with sketchbooks, evidence of sustained drawing and any work developed over the last three years. We do not expect the portfolio to contain only drawing but a good proportion of drawing should be evident. Larger work can be represented by photographs.







From *The Tiger Who Came to Tea* to *Charlie and Lola*, the vibrancy and imagination of the best illustrated children's books almost seems intuitive, but amazing skill and artistry goes into making them. This year-long course is designed to help you explore how children's books work, and to give you practical tips and ideas to help you develop your own story and to realise it in book form.

### COURSE INFORMATION

The Children's Book Illustration course will guide you through the process of creating a children's book of your own, breaking down the skills needed through accessible workshops and tasks so that you gradually build up the ability to tackle a more sustained and personal book project with confidence. The tutor has a wide range of experience of different facets of the publishing industry and covers key aspects of the field, including idea development, character design, drawing and illustration, sequential imaging and page design. The course provides a platform for discussing your ideas and working methods with other artists and illustrators, opening up topics including how to use visual language to enhance storytelling, and how to approach the publishing industry and agents. The course also gives you the opportunity

to develop a portfolio of illustrations supported by a sketchbook of ideas and development work. Drawing and storytelling are the cornerstones of the course, and the first term will be largely spent using sketchbooks to respond to short workshops designed to explore and develop these skills. The second term will include a combination of workshops as well as a longer book project and a drawing trip to Edinburgh Zoo. The final term will be entirely dedicated to an independent book project where you will be encouraged to write, illustrate and make your own 'dummy' children's book, working to professional specifications, for inclusion in the School's End of Year Exhibition.

### APPLICATION

This course is suited to practicing artists who want to focus on developing new skills in illustration as well as those with an abiding interest in illustration, storytelling and a love of children's books. Applicants are interviewed with their portfolio which should show evidence of range of drawing and visual communication skills. These can include illustration, painting, printmaking or visual communication design. Applicants are also encouraged to bring in their sketchbooks and notebooks to show their working methods. No prior experience of children's book illustration is required.





## CONTEMPORARY ART PRACTICE

This is a studio-based fine art course with an emphasis on enquiry and experimentation. Engagement with ideas, materials and processes will lead students to consider what it means to be making art in the 21st century. The aim of the course is to provide new possibilities of expression, with students learning how to develop and refine ideas through the making of art, acquiring an understanding of how the choice of media, technique and form communicate meaning.

Studio work will be supported by a programme of lectures, visiting artists and gallery visits, reflecting the major developments and diversity in contemporary art. An examination of the strategies, concepts and innovative practices employed by contemporary artists will be key; students will be encouraged to discuss their own work, and to question, analyse and communicate their response to the work of others.

### COURSE INFORMATION

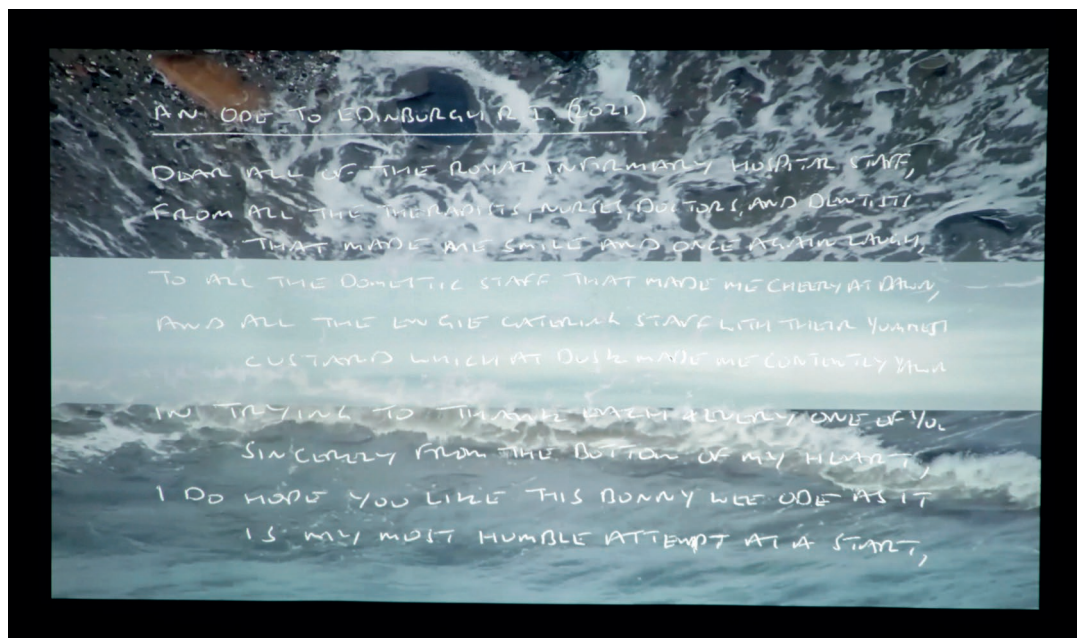
Initially, a series of projects will introduce fresh ways of working with traditional art materials and techniques, as well as introducing new and unexpected media. With a very hands-on and intuitive approach, students will be encouraged to experiment and learn to understand the unique properties of materials and how they can be used to both generate and communicate ideas.

Lectures and tutorials will provide a framework for conceptual exploration. Thinking and making will develop side by side along with creative decision-making, problem-solving, risk-taking and discovery. Students may choose to broaden the scope of their work through site specific, collaborative, installation, or performance art, as well as sound and digital media.

As the course progresses, students will develop an individual direction for their work. During an extended personal project, students will select media and techniques they feel are relevant to, and will best express, their ideas. Where appropriate, seminars and lectures will be designed to support the emerging interests and aspirations of the students. These will also enable students to have greater confidence in their individual creativity as they consider and understand where their own work is situated within the context of contemporary art practice and culture.

### APPLICATION

This course is ideal for anyone who has been making their own art and would like to develop their work beyond traditional and disciplinary boundaries. Applicants are interviewed with their portfolio, which should show evidence of around 10 pieces of work, or 2-3 larger projects, made in the last three years and include work which demonstrates experimentation, visual research and the development of ideas.



## FIGURE COURSE

The Figure Course provides a dynamic environment for students to develop their skills in depicting the figure and to develop their own artistic voice. Students will explore different methods of representation to deepen their understanding of the subject, such as drawing, the study of anatomy, and the use of colour. Through looking at other artists and considering various ideas about how depictions of the human form engage with subjects as diverse as beauty, suffering, politics and gender, students will reflect on how these may influence the production of artworks, choice of materials and the language of representation.

### COURSE INFORMATION

Working directly from life models, draped and undraped, is a key part of the course. Subjects include human anatomy, portraiture and composition, and study trips outside of the studio. An important aspect of the course will be the use of materials. Study will be made initially through drawing and techniques of representation - line, tone, colour and scale. Students will work in oil and acrylic paint and also learn printmaking techniques.

The first half of the course will focus on set projects that explore different aspects of figure drawing and painting. In the second half students will be encouraged to develop a personal body

of work that explores a chosen theme or subject through a process of practical research and development, using any of the media available. There will be models available throughout the personal project process. Each student will be asked to make an independent study of an artist who they feel embodies certain aspects of what they are interested in pursuing or looking to achieve. Group discussions and the interchange of ideas with tutors and class colleagues add to a mutually supportive learning process. This encourages students to develop questioning and confident self-appraisal rather than providing or imposing styles or techniques.

On completion of the course students will have produced a body of work reflecting their personal perspective on the depiction of the human body, and will be able to consider the next steps in their art practice.

### APPLICATION

Applicants are invited to interview with their portfolio, which should show evidence of work completed in the last three years. Experience of figure painting is not essential, but some experience of life drawing is desirable.





The landscape has been a source of inspiration to artists throughout history and continues to occupy the work of artists in contemporary practice. This course will allow students to fully explore the range of landscape in and around Edinburgh which offers a diversity of environments including rural, urban, seascape and industrial. Students will have the opportunity to explore the unique and changing light conditions, the transient weather and dramatic topography that the city and rural environment have to offer and they will be encouraged to find a means of expression within the genre. Throughout the course there will be references made to historic as well as contemporary artists.

### COURSE INFORMATION

The course will emphasise the importance of sketchbook work, both as a tool for visual recording on location and as a method of developing ideas and composition. In the first term the group will visit a number of locations and use these drawings as a starting point for further studies. In term two students will concentrate on painting small studies in series, exploring a wide range of materials and techniques which will be exploited in more considered, sustained pieces in the third term. Students will develop a rigorous approach to making

art, working from location drawing, sketchbook development, small studies and large scale painting. The course will explore colour theory, mark making, surface preparation, composition, line and tone. Projects and personal work will be executed with a broad range of drawing materials and will explore acrylics, oils, print and mixed media. As the course develops, students will be expected to develop an independent visual language in response to the landscape, experimenting with technique and expression while exploring their ideas. Students will be encouraged to think dynamically about what it means in contemporary terms to paint the landscape and strategies will be put in place to facilitate courageous painting, lively discourse, ambitious ideas and dynamic art. Throughout the course there will be location and gallery visits, illustrated talks, demonstrations and visiting artists talks.

### APPLICATION

Applicants are invited to interview with a portfolio containing evidence of drawing and painting. Extensive work based on the landscape is not necessary, but applicants should show ability in handling a range of materials and have sketchbooks or other working drawings to show development of ideas.







## ONE DAY PAINTING COURSE

This course provides a unique opportunity for anyone who wants to develop their own art practice in a structured and supportive environment. The course allows students to develop their own artwork, refining their painting skills through an intensive programme of teaching. This course has been specifically designed for those wishing to gain a deeper understanding of their own practice, whilst being pushed in new directions, both technically and conceptually.

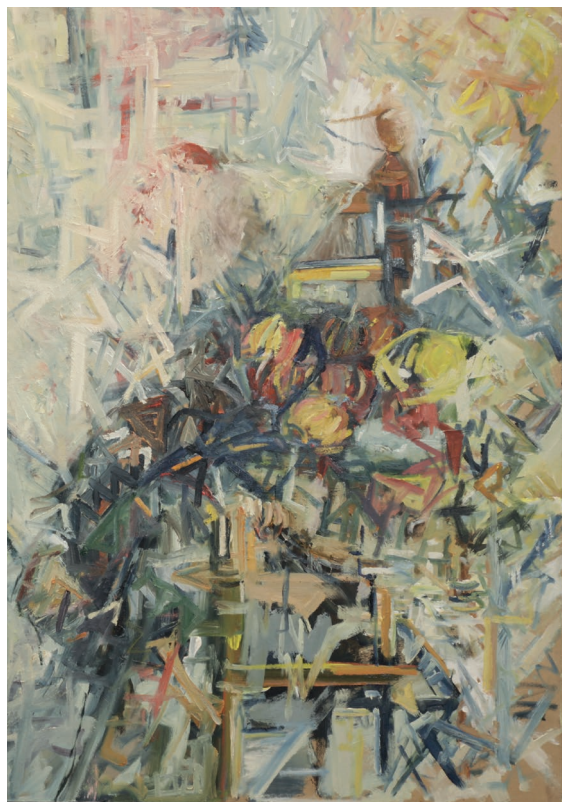
### COURSE INFORMATION

The first term begins with lessons and lectures dealing with the formal aspects of constructing a painting. The course then progresses to structured personal projects for students to develop their own subjects and ideas. By the second term, students will be pursuing their own projects, generating multiple ideas and selecting and editing these into final pieces. The third term is dedicated to consolidating and creating a resolved body of work by focussing their ideas in greater depth. Understanding the history of painting is an important element of the course and there are regular lectures discussing this. Students will also be required to research contemporary painting scenes and to consider where their own work is most relevant. Group

crits and seminars are conducted, giving students the opportunity to have their work reviewed in a peer-to-peer context. In addition to the studio work, students are expected to undertake some preparation for the course at home; reading, research drawing and trips to exhibitions. By the end of the course, students will have produced a substantial body of work which should be personal and distinguishable as their own. Students will show their work at the end of year exhibition in June.

### APPLICATION

This course suits those with experience in painting, who wish to develop their practice further. Applicants wanting to improve their portfolio or enhance their current body of work should consider this course. Applicants are interviewed with their portfolio which should show evidence of drawing and painting completed in the last three years.



Printmaking provides an ideal method of creating new and visually exciting images and offers the artist fresh and often unexpected creative outcomes. This course provides the advantage of a sustained engagement with the medium and an opportunity for students to develop their work fully, through an intensive period of study.

### COURSE INFORMATION

The course aims to provide an in-depth engagement with printmaking within a friendly, informed and supportive environment. Students extend their individual creative potential and develop skills to further their creative and professional progression. Students are taught processes which include relief, intaglio, screen print, monotype, collagraph and carborundum methods. All processes are supported by tutorials, workshops, group seminars and visiting lecturers. Emphasis is placed on exploring innovative ways to develop the language of printmaking both as an end in itself and as a vehicle for extending work in other disciplines and contexts. The School-wide theme provides the starting point for the development of a self-directed body of work. Throughout the course, students have one-to-one discussions with the tutor, reflecting on creative goals and outcomes. Working

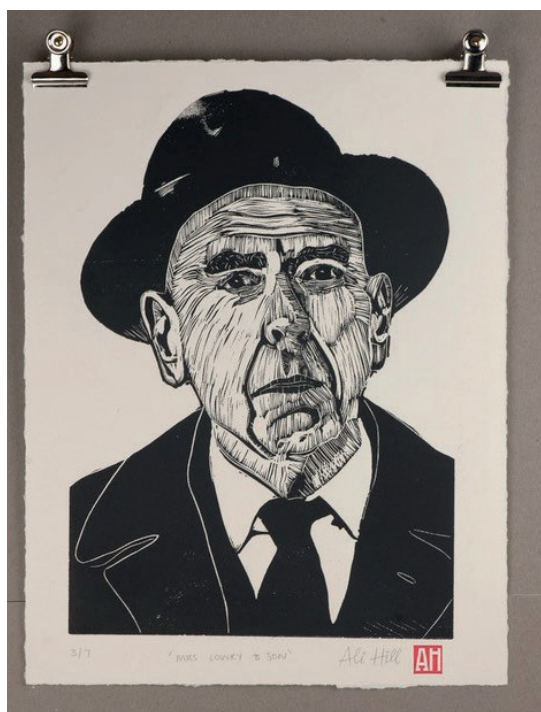
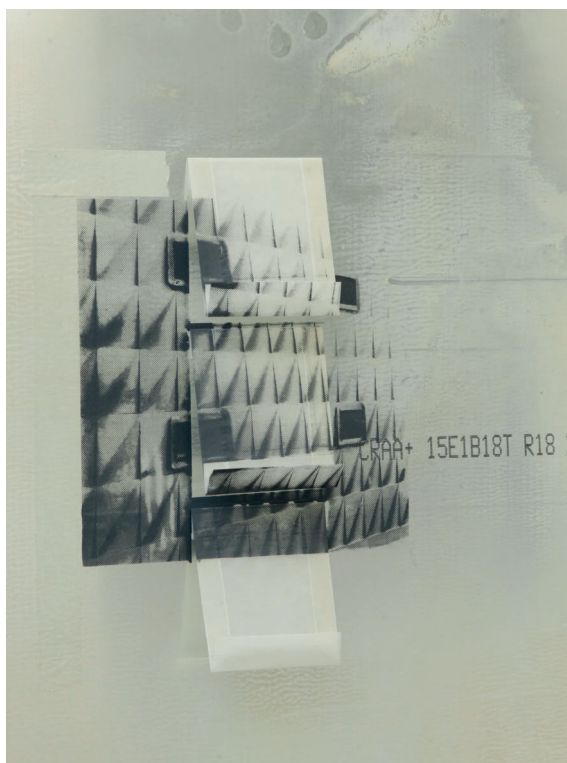
in an open studio, students learn from each other's work and find solutions to technical and aesthetic issues. They also have opportunities to assess their own technical and artistic development through presentations and supportive group exchanges with peers, helping to develop ideas and gain confidence in the development of their practice.

On completion of the course, students will have developed a major portfolio of new work and gained experience across a range of printmaking processes. They will have also developed critical and professional skills necessary for continuation as a visual practitioner, or towards further academic study. The end of year Exhibition provides an ideal platform for exhibiting work completed on this course.

### APPLICATION

The course is suitable for individuals who are self-motivated and who wish to find ways to expand their visual language through printmaking. Applicants will be interviewed with their portfolio, which should contain evidence of work made in the last three years. Previous printmaking experience is not necessary.





## ADVANCING STUDIO PRACTICE

### Advanced Course

Advanced Studio Practice provides a structured year-long programme of teaching which supports individuals in the development of a confident self-directed studio practice and a distinctive creative voice. The course is ideal for those individuals who may have experience of previous learning but who are still discovering their unique means of expression. It is designed to further a student's creative ambitions towards professional development or as a springboard for further advanced study.

#### COURSE INFORMATION

The course is delivered through a year-long programme of weekly teaching aimed at supporting each student in the development and articulation of a self-directed and coherent individual practice.

In the first term the course provides a series of workshops and project activities through which students explore, test and develop key areas of creative interest.

Drawing forms the starting point of this process from which students are encouraged to experiment with a range of materials and processes as a means of identifying key area of interest.

Throughout this process students are encouraged to develop a critical and selective review of practice as a means of assessing and evaluating their individual

progress. This is supported by regular one to one tutorials and peer-group feedback sessions. Regular lectures, seminars and peer group sessions provide a contextual framework to studio activities and an opportunity to exchange ideas, review progress, and test creative ideas.

In term two students work with their tutor to identify potential areas of interest and to establish an individual pattern of practice in preparation for a major project in term three, culminating in the End of Year Exhibition in June. On completion of the course students will have developed a major portfolio of work suitable for further professional self-development as creative practitioners. Students may also choose to progress their independent learning on the Leith School of Art Mentoring programme or towards further higher academic study.

#### APPLICATION

Applicants to Advancing Studio Practice are invited to interview with a portfolio of recent work. The portfolio should contain a critical selection of recent work which demonstrates the development of potential themes with the potential for further development.







## ARTIST'S MENTORING

### Advanced Course

Making the transition from learning to life as an independent practicing artist is an exciting but sometimes daunting prospect. This course provides the essential support necessary for you to build an advanced creative practice with guidance and expertise of an experienced mentor. The programme is designed to be flexible and responsive to individual needs and our team of professional mentors provide support as you develop your creative ideas. Artists on the course will be provided with sustained one to one support plus opportunities to exchange ideas and experiences with fellow students.

#### COURSE INFORMATION

Through the course students are encouraged to develop their personal research interests to a point where they feel confident working as independent artists. In the first term students work with their mentor to identify and establish a personal research project which aims to build their creative and professional practice. This project is developed over the year culminating in a professional body of work which reflects

the specific interests of the individual whilst also engaging in dialogue with contemporary art discourse.

#### APPLICATION

The programme is ideal for those who already have experience in their chosen area of creative practice and are wishing to further develop their creative and professional engagement. Applicants are invited to interview with a portfolio containing a selection of recent work. We are looking for a portfolio submission which demonstrates a critically considered and sustained body of work. Students should have their own studio or workspace in order to undertake this course.



## GRADUATE RESIDENCY PROGRAMME

### Advanced Course

Leith School of Art's Graduate Residency is designed to support a recent graduate in the vital early stages of their career. The programme presents a unique opportunity to enable a resident to develop a substantial body of new work towards professional practice or further postgraduate study. The successful applicant benefits from free materials and a studio space located within a supportive art school environment in the heart of Leith. A personal tutor and visiting lecturers offer support throughout the year, with critical feedback and strategies for situating personal practice within a contemporary art context.

### STRUCTURE

During the programme, the graduate develops a proposal of study within art or design practice, outlining focused critical enquiry and personal contextual research. Studio practice will be supported by exhibition opportunities and professional consultation from visiting practitioners. In addition, the graduate resident will be offered the opportunity to contribute to lectures, seminars and studio teaching with the guidance and support of experienced tutors. The resident is encouraged to develop an online research portfolio

including an archive of recent works and relevant written texts. This portfolio will be available for peers and tutors and may be adapted at the end of the course to become an online portfolio. The Residency culminates in a final exhibition of works as part of the annual Leith School of Art summer exhibition programme.

### APPLICATIONS

The programme is open to applications from current final year students or recent graduates (within two years) from BA or MA courses in Art and Design.





## APPLYING

Applicants are welcome to contact the School before submitting an application. This can help enormously to refine ideas and aims, and to identify which course is most suitable. Open Days take place during the academic year where tutors are available to provide guidance on what makes a successful portfolio.

We ask for a personal statement in support of your application. This is an opportunity for applicants to express their current creative interests and influences and to suggest how studying at the School will help progress to the next step in their artistic career.

A reference is also required, ideally from someone who is familiar with the applicant and their artwork. A personal reference can be submitted if this is not possible. Please ensure that the reference is submitted directly to the Student Registrar & Welfare Officer. The referee should state the applicant's full name at the top of the reference.





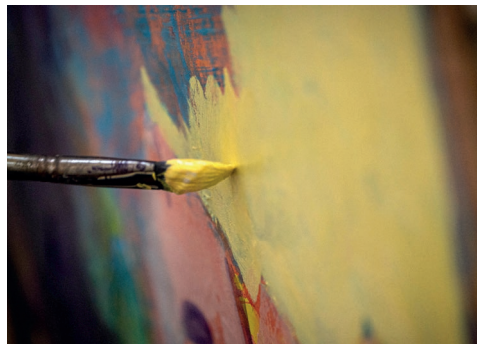
## ABOUT EDINBURGH

Edinburgh is steeped in history and culture, and the old and new towns of the city have been listed as a UNESCO World Heritage Site. Edinburgh is an easy city to explore and has an excellent transport system.

There are many galleries and museums in the city, including some of the most significant in Scotland and all are within easy walking distance. There are also a number of theatres, cinemas and music venues throughout the city to suit all tastes.

Artists have long been drawn to Leith for its distinct identity, rich industrial history and picturesque surroundings. Traditionally a shipping town, Leith is a vibrant and diverse community and has in recent years grown to be an exciting cultural magnet with an array of exciting new creative businesses, cafes and arts venues.

In a 2023 poll conducted by Time Out, Leith was voted number 16 of 40 in the list of the coolest neighbourhoods in the world!





## STUDENT SUPPORT

Leith School of Art is committed to encouraging and welcoming all those who want to learn about art and design.

We want our high quality teaching to be available to everyone. Our tutors have expertise at leading courses with a wide range of capability, and put great emphasis on encouraging and teaching each student on an individual level.

We understand that there may be times when help and advice is required. Our Welfare Officer is here to listen and provide advice on issues including settling in, finances, accommodation, additional needs and personal safety.

Our administration team will be happy to help with any questions you might have about studying and living in Edinburgh.



## FEES & FUNDING

For details about our fees please refer to our website, or contact the School.

### BURSARIES

Leith School of Art is an independent school and is a company limited by guarantee and a registered charity.

We are committed to providing access to our courses to people of all backgrounds, experience and aspiration. We believe in supporting students as much as possible, and this also includes financial support.

With this in mind we have a bursary scheme which is funded from our supporters and a wide range of trusts and foundations.

Should you wish to be considered for a bursary you must first apply and be accepted on a year-long course. Bursaries awarded range between 10% and 70% but can be more in exceptional circumstances.

There is no deadline for submitting your application but it is advisable to complete and return at your earliest convenience as there is a limited amount of funding available.



## BOOKING INFORMATION

### LOCATION

Our courses take place in studios at 25 North Junction Street (NJS Campus) and 66 Albion Road (AR Campus).

### FEES

The course fees cover professional tuition, lectures, models, use of studios and equipment, and core materials. Also included, where applicable, are the cost of entrance fees to venues visited as part of the course.

### PAYMENT

A deposit of £250.00 is required at time of enrolment and the balance of fees is due 3 weeks prior to the start date of the course. If the enrolment is made within 3 weeks of the start date full fees are payable. In some circumstances payment can be made by instalment. Please contact the Year-long Course Administrator for further details. Payment can be made by BACS transfer, credit/debit card, in cash or by cheque. Cheques should be made payable to Leith School of Art.

### CANCELLATION

Leith School of Art reserves the right to cancel courses if the circumstances dictate. If this happens you may be offered a suitable alternative course, or a full refund of your deposit and fees. Our year-long courses require a minimum number of students to run. Courses which do not reach this number will be cancelled not later than 3 weeks before they are due to start.

If you cancel more than 3 weeks before the start of the course your fees will be refunded minus the enrolment deposit. Once the course has commenced fees are non-refundable.

In exceptional circumstances we may be

able to offer a full or partial refund. In this instance we request that you outline the circumstances in writing to the Year-long Course & Operations Manager.

### ACCESSIBILITY

Leith School of Art welcomes students with additional support and access needs. Please contact the School for further information and to discuss your support and accessibility needs before applying.

### PERSONAL INFORMATION

We will use the personal information that you provide to Leith School of Art:

- to administer and provide our courses to you;
- to process payment in relation to any enrolment;
- to inform you about similar courses and other services that we provide, but you may stop receiving these at any time by contacting us via the website, telephone, or in writing to the School.

Where LSA uses third party service providers we disclose only the personal information that is necessary to deliver the service (Access Group database, Mailchimp mailing service, Worldpay secure payment provider, Everyone website developer, Egia Financial). This information is kept secure and is not used for their own direct marketing purposes.

We will not share your personal data with any third party (other than with the third parties stated above).

You have the right to access information held about you. Your right of access can be exercised in accordance with the Data Protection Act 2018.

### DISCLAIMER

The information given in this prospectus is as far as possible accurate at the date of publication. The programme is subject to change without notice.